

# EVI-D100<sup>(NTSC)</sup>

# EVI-D100P<sup>(PAL)</sup>



## Outline

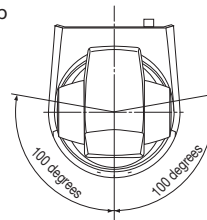
The EVI-D100/D100P are pan/tilt SD color cameras equipped with a wide angle zoom lens and a quick, quiet direct drive pan/tilt mechanism in a single, compact unit.

## Features

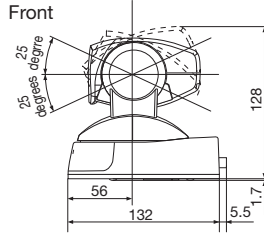
- Quick, quiet pan/tilt mechanism made possible with direct drive motor
  - Horizontal:  $\pm 100$  degrees (Maximum speed: 300 degrees/sec)
  - Horizontal:  $\pm 25$  degrees (Maximum speed: 125 degrees/sec)
- Wide angle, auto focus 10x optical zoom lens
  - Horizontal field angle: 65 degrees (wide end)
  - $f=3.1$  mm (wide) to 31.0 mm (tele)
  - F1.8 to F2.9
- Dimensions: 113 (W)  $\times$  120 (H)  $\times$  132 (D) mm (Maximum dimensions (not including protruding parts))
- External control via VISCA protocol RS-232C interface
- EVI-D30/D31 emulation mode
- 6 position presets

## Dimensions

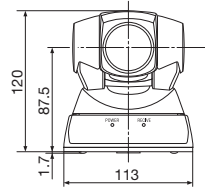
Top



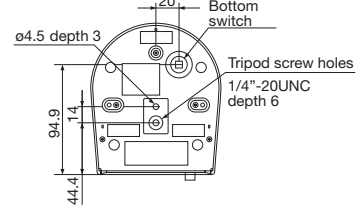
Front



Side



Bottom



Unit: mm

Accessories  
 Color Camera Module  
 Color PTZ Camera  
 EVI

Intelligent  
 Digital Video Camera  
 XCL  
 XCD  
 XCG

Analog Video Camera  
 XC (Non-TV Format)  
 XC (TV Format)

## Specifications

	EVI-D100	EVI-D100P
Image sensor	1/4-type Super HAD CCD	
Effective Number of Pixels	Approx. 380,000 pixels	Approx. 440,000 pixels
Signal system	NTSC	PAL
Sync system	Internal	
Video out	VIDEO OUT : RCA phono jack (1), 1 Vp-p, 75 Ω, unbalanced Synchronization : negative, S VIDEO OUT : Mini DIN 4-pin type (1)	
Camera control	VISCA (IN/OUT) : Mini DIN 8-pin type, RS-232C, 9,600 bps, 38,400 bps, Data : 8 bits, stop : 1 bit	
Lens	10x optical zoom, f=3.1 mm (wide) to 31.0 mm (tele), F1.8 to F2.9	
Digital zoom	4x (40x with optical zoom)	
Horizontal angle of view	65.0 degrees (wide) to 6.6 degrees (tele)	
Minimum object distance	10 mm (wide end), 600 mm (tele end)	
Horizontal resolution	470 TV lines (wide)	460 TV lines (wide)
S/N ratio	More than 50 dB	
Minimum illumination (Typical)	3.5 lx (F1.8, 50IRE)	
Shutter speed	1/4 sec to 1/10,000 sec (VISCA control)	1/3 sec to 1/10,000 sec (VISCA control)
Gain	Auto, Manual (-3 dB to +28 dB, 3 dB 8 steps)	
Pan/Tilt	Horizontal : ±100 degrees (Maximum panning speed: 300 degrees/sec, When maximum speed is set with VISCA control) Vertical : ±25 degrees (Maximum tilting speed: 125 degrees/sec, When maximum speed is set with VISCA control)	
Ceiling mountable	No	
Installation angle	Less than ±15 degrees to the horizontal surface	
Operating temperature/humidity	0°C to 40°C/20% to 80%	
Storage temperature/humidity	-20°C to +60°C/20% to 95%	
Power requirements	DC 12 V (DC 10.8 V to 13.0 V)	
Power consumption	1.1 A (at 12 V DC)	
Power connector	JEITA type 4 (DC IN 12 V)	
Mass	Video Camera : 880 g, Remote Commander : 190 g	
Dimensions (W × H × D)	Video Camera: 113 × 120 × 132 mm, Remote commander : 56 × 26 × 210 mm (not including protruding parts)	
Supplied accessories	AC power adaptor (1), AC power cord (1), Remote commander (1), Velcro tape (3 sets), Operating Instructions (2)	

The values for mass and dimension are approximate.

\* "VISCA" is a trademark of Sony Corporation  
"EXview HAD CCD" is a trademark of Sony Corporation

XCG  
XCD  
XCL

XCI

XC (Non-TV Format)  
XC (TV Format)

Accessories

Color Camera Module  
FCB

Color PTZ Camera  
EVI